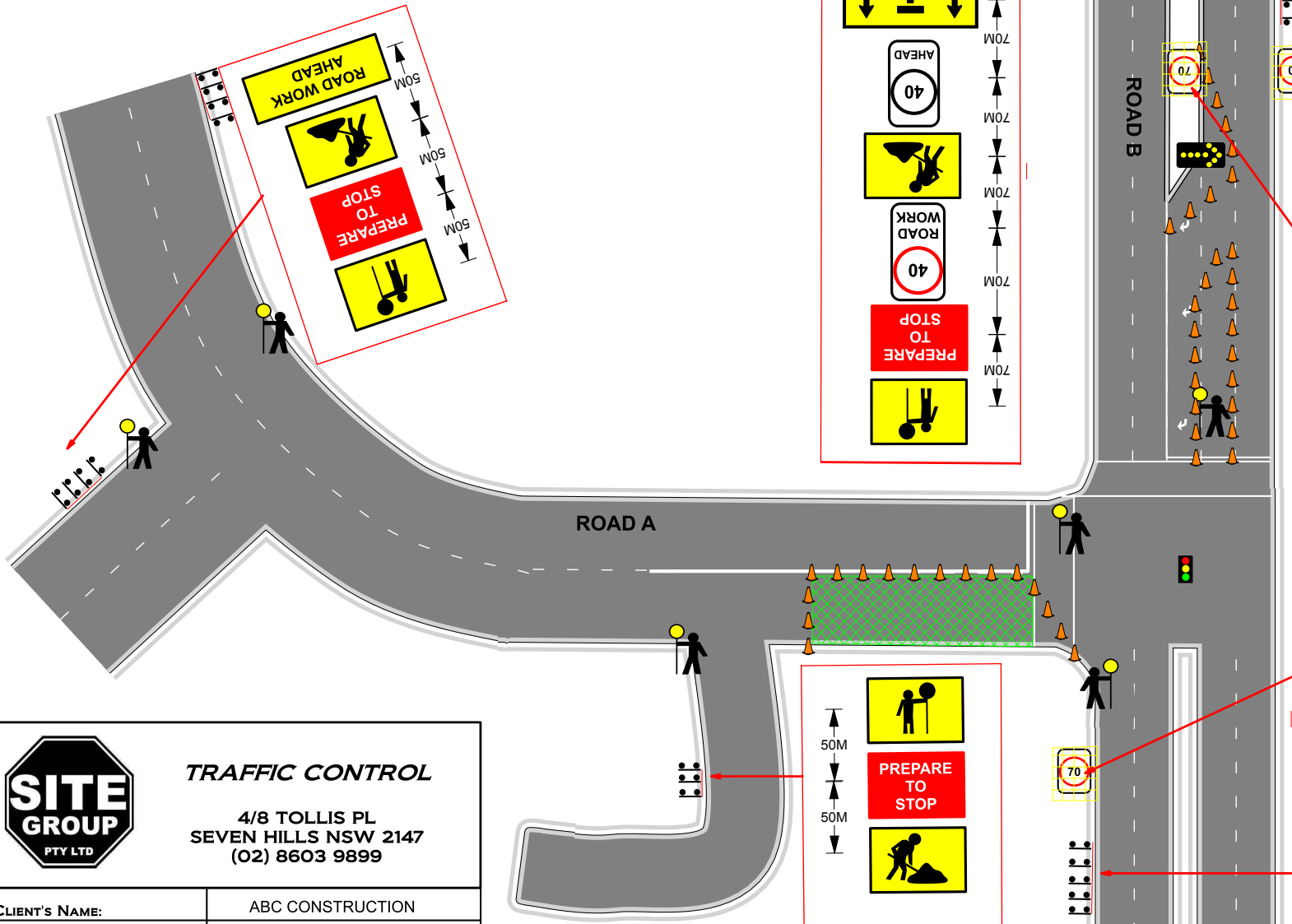
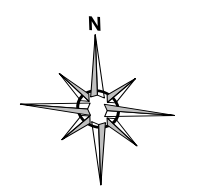


Legend

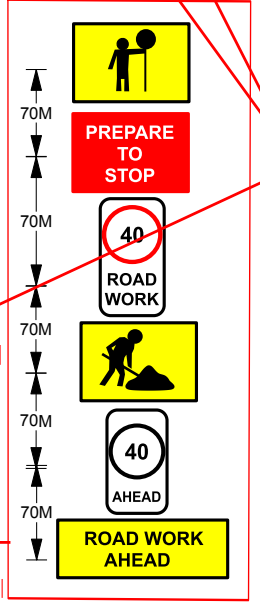
- Cone
- Safety Zone
- Work Area

6 RTA AUTHORISED TRAFFIC CONTROLLERS ARE REQUIRED TO CONTROL THE SAFETY OF WORKERS, MOTORISTS AND PEDESTRIANS

2 TRAFFIC CONTROL VEHICLES WILL BE REQUIRED FOR THIS SETUP



- ### NOTES
- LANE WIDTHS MUST BE AT LEAST 3M ALLOWING VEHICLES TO SAFELY PASS THROUGH THE WORK AREA
 - PEDESTRIANS NEED TO BE ESCORTED THROUGH THE WORK AREA IF NECESSARY
 - ALL WORK PERFORMED IS TO COMPLY WITH TCWS V4 AND AUSTRALIAN STANDARD 1742.3
 - TRAFFIC MAYBE STOPPED TEMPORARILY IF NEEDED
 - SIGNS ARE TO BE POSITIONED SO THEY ARE CLEARLY VISIBLE TO MOTORISTS AND DO NOT CAUSE A HAZARD TO PEDESTRIANS
 - THIS TRAFFIC CONTROL PLAN MAYBE MODIFIED BY A PERSON WHO HOLDS A MINIMUM OF RTA RED CARD (SELECT AND MODIFY)



EXISTING SPEED SIGNS WILL NEED TO BE COVERED FOR THE SPEED REDUCTION.



TRAFFIC CONTROL

4/8 TOLLIS PL
SEVEN HILLS NSW 2147
(02) 8603 9899

CLIENT'S NAME:	ABC CONSTRUCTION
LOCATION OF WORK	ROAD A SYDNEY
ON SITE CONTACT NAME:	MICK
ON SITE CONTACT NUMBER:	**** * * * *
PLAN NO:	* * * *
TYPE OF CLOSURE:	STOP/SLOW TRAFFIC CONTROL

Date	Plan Drawn By	Red Ticket Number	Notes	Traffic Cones			Taper Lengths			Signs			
				Spacing (60-80km/h)	12m	Merger Taper	2Dm	Size	"A", "B" or "C"	Speed of traffic km/h	TC at beginning of taper	Lateral Shift Taper	Merge Taper
03/05/2012	JOHN SMITH		*This plan remains the property of Site Group.	Spacing (Over 80km/h)	15m	Lateral Shift Taper	Dm	Spacing	2Dm	46-55	15	15	30
UBD REF		Orange Ticket Number	*This Plan is Not to Scale.	Merge Taper (60-80km/h)	9m	Attended STOP/SLOW	30m	Advance Warning Area To Transition Area.	2Dm	56-65	30	30	60
927 N16			*This TCP complies with Aust Standard 1742.3 and RTA TCWSM Version 4.	Lateral Shift (60-80km/h)	12m	Dm = SPEED LIMIT		Use class 2 reflective signs for day work & class 1 reflective signs for night work		66-75	N/A	70	115
										76-85	N/A	60	130
										86-105	N/A	90	145
										Greater	N/A	100	160
										105	N/A	110	180

Site Group accepts no liability for the implementation or execution of this TCP unless under taken by authorised Site Group personnel // All TCP's are copyright/property of Site Group and are not transfereable unless authorised by Site Group.